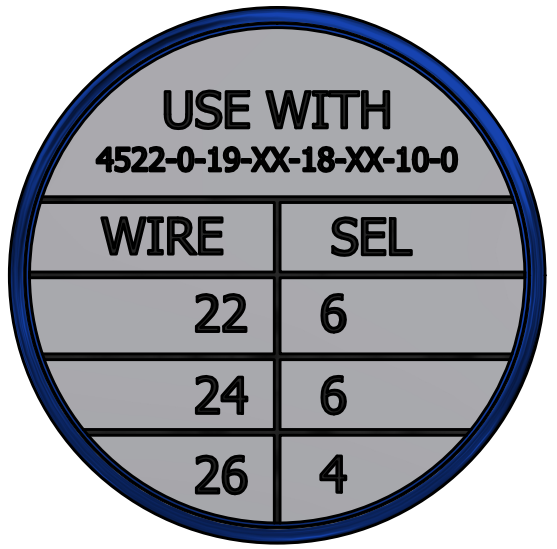
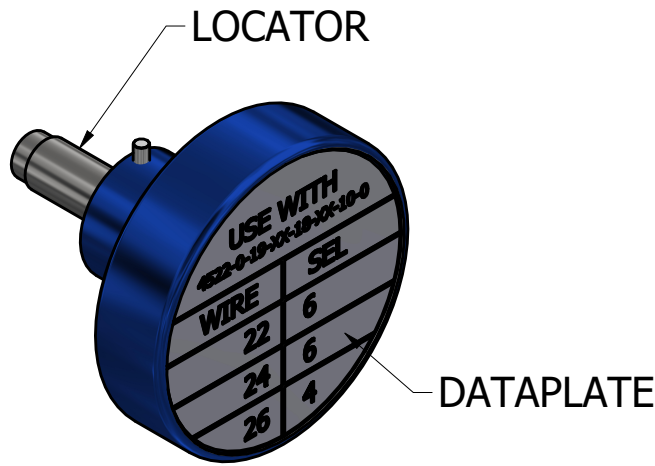
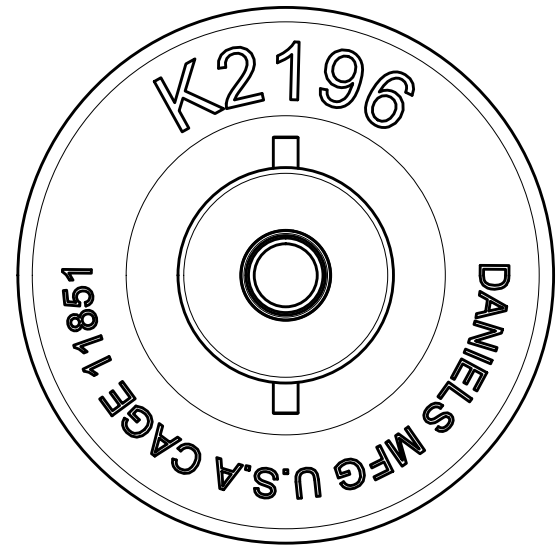
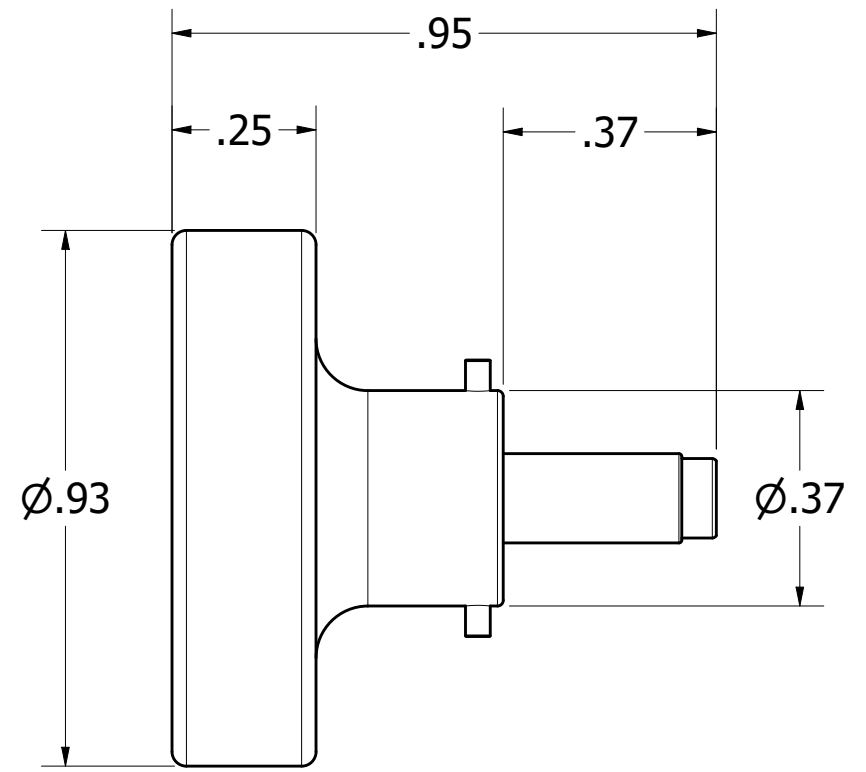


REVISIONS

REV	ECO NO.	DESCRIPTION	BY	DATE	APP'D BY	DATE
1		INITIAL RELEASE	L.MONTMINY	10/29/2024		



DATAPLATE VIEW
SCALE 3:1



LOCATOR	
HOLE DIMENSIONS	ADDITIONAL FEATURES
Ø .109 ▽.206	

**UNCONTROLLED DOCUMENT
WILL NOT BE UPDATED**

DIMENSIONS IN INCHES - UNLESS OTHERWISE SPECIFIED

RESTRICTED & CONFIDENTIAL

CONFIDENTIAL PROPERTY OF DANIELS MANUFACTURING CORP. NOT TO BE DISCLOSED TO OTHERS. REPRODUCTION OR USED FOR ANY OTHER PURPOSE EXCEPT AS AUTHORIZED IN WRITING BY DANIELS MANUFACTURING CORP. MUST BE RETURNED TO DANIELS MANUFACTURING CORP. ON COMPLETION OF ORDER OR PURPOSES FOR WHICH LENT.

DRN. L.MONTMINY	DATE 10/22/2024	INTERPRET PER ASME Y14.5M-2018	
CHK'D KCK	DATE 10/22/2024	DANIELS MANUFACTURING CORP. ORLANDO, FLORIDA CAGE 11851	
APP'D T.KUHL	DATE 10/22/2024		
NOTE: THIS DRAWING IS AN OUTLINE DRAWING OF THE RESPECTIVE DMC PART NUMBER INDICATED.		TITLE POSITIONER ENVELOPE DRAWING	
WHERE USED: N/A		SIZE B	SHEET 1 OF 1
SCALE N.T.S.		CAD NO. K2196_ENV	REV. 1
		PART NO. K2196	