

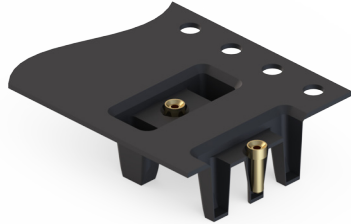
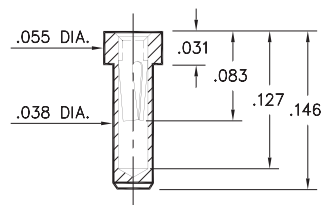
PIN RECEPTACLES

**FOR .015" - .020" DIAMETER PINS (#11 CONTACT)
FOR .015" - .022" DIAMETER PINS (#21 CONTACT)
RECEPTACLES ON TAPE & REEL PACKAGING**

1407

1407-0-15-XX-11-XX-10-0

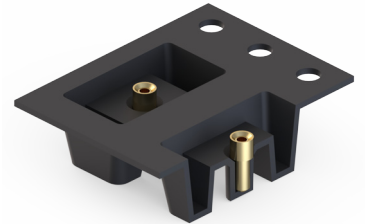
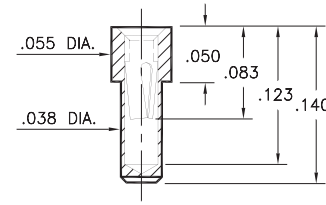
Solder mount in .040 min. mounting hole
Also available on 16mm wide carrier tape:
1,500 parts per 13" reel
Order as: 1407-0-57-XX-11-XX-10-0



0569

0569-0-15-XX-X1-XX-10-0

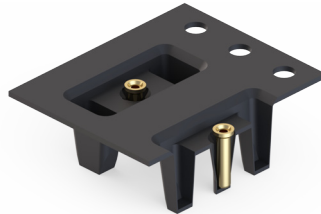
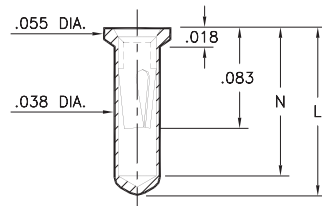
Solder mount in .040 min. mounting hole
Also available on 16mm wide carrier tape:
2,000 parts per 13" reel
Order as: 0569-0-57-XX-X1-XX-10-0



0552

0552-X-15-XX-X1-XX-10-0

Solder mount in .040 min. mounting hole
Also available on 16mm wide carrier tape:
1,500 parts per 13" reel
Order as: 0552-X-57-XX-X1-XX-10-0

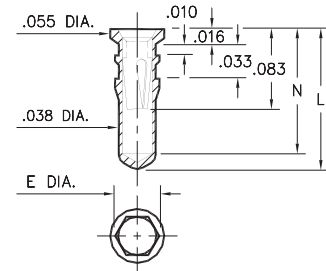


Basic Part Number	Length L	Depth N
0552-1	.136	.120
0552-2	.170	.150

0553

0553-X-15-XX-X1-XX-10-0

Also available on 16mm wide carrier tape:
1,580 parts per 13" reel
Order as: 0553-2-57-XX-11-XX-10-0

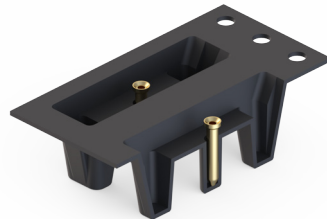
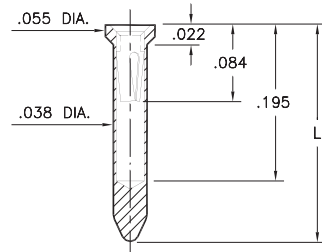


Basic Part Number	Hex Dia. E	Length L	Depth N
0553-1	.044	.140	.124
0553-2	.044	.170	.154
0553-3	.044	.282	.266

8579

8579-X-15-XX-X1-XX-10-0

Solder mount in .040 min. mounting hole
Also available on 24mm wide carrier tape:
See chart for Tape & Reel Qtys.
Order as: 8579-X-57-XX-X1-XX-10-0



Basic Part Number	Length L
8579-0	.234
8579-1	.295

T&R Packaging

Basic Part Number	Tape Width	Parts per 13" Reel
8579-0	24mm	1,200
8579-1	24mm	1,000

SPECIFICATIONS:

Shell Material: Brass Alloy 360, 1/2 Hard

Contact Material: Beryllium Copper Alloy 172, HT

Dimensions: Inches

Tolerances On: Lengths: ±.005

Diameters: ±.002

Angles: ±2°



ORDER CODE: XXXX - X - XX - XX - XX - XX - 0

BASIC PART #

SPECIFY SHELL FINISH:

- 01 200 μ" TIN/LEAD OVER NICKEL
- ◆ 80 200 μ" TIN OVER NICKEL (RoHS)
- ◆ 15 10 μ" GOLD OVER NICKEL (RoHS)

SPECIFY CONTACT FINISH:

- 02 100 μ" TIN/LEAD OVER NICKEL
- ◆ 84 100 μ" TIN OVER NICKEL (RoHS)
- ◆ 27 30 μ" GOLD OVER NICKEL (RoHS)

SELECT CONTACT:

#11 or #21 CONTACT (DATA ON PAGE 251)

(For alternate contact choices, see group A on page 248)

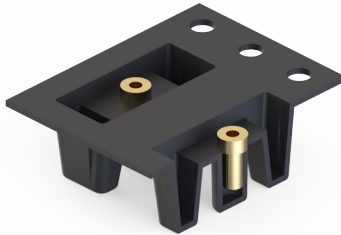
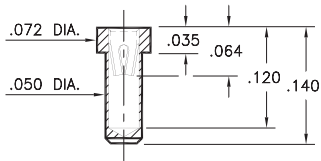
PIN RECEPTACLES

**FOR .015" - .022" DIAMETER PINS
RECEPTACLES ON TAPE & REEL PACKAGING**

0550 *

0550-0-15-XX-22-XX-10-0

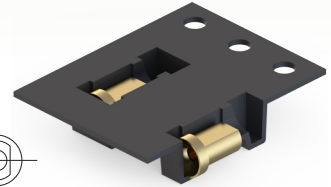
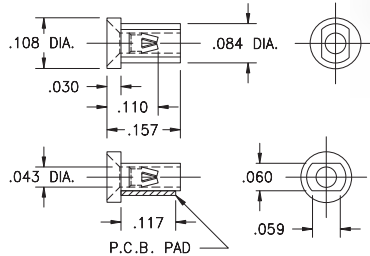
Solder mount in .052 min. mounting hole
Also available on 16mm wide carrier tape:
1,700 parts per 13" reel
Order as: 0550-0-57-XX-22-XX-10-0



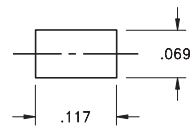
5739

5739-0-18-XX-12-XX-10-0

Surface mount
Also available on 16mm wide carrier tape:
3,000 parts per 13" reel
Order as: 5739-0-58-XX-12-XX-10-0



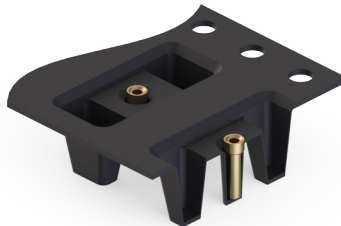
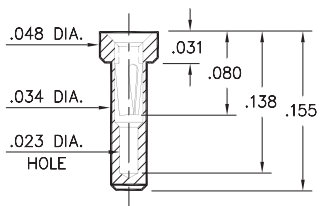
P.C.B. Layout



3016

3016-0-15-XX-21-XX-10-0

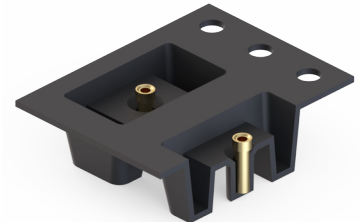
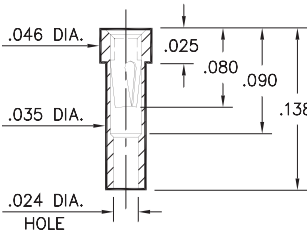
Solder mount in .036 min. mounting hole
Also available on 16mm wide carrier tape:
1,900 parts per 13" reel
Order as: 3016-0-57-XX-21-XX-10-0



8637

8637-0-15-XX-21-XX-10-0

Solder mount in .037 min. mounting hole
Also available on 16mm wide carrier tape:
2,000 parts per 13" reel
Order as: 8637-0-57-XX-21-XX-10-0



SPECIFICATIONS:

Shell Material: Brass Alloy 360, 1/2 Hard

Contact Material: Beryllium Copper Alloy 172, HT

Dimensions: Inches

Tolerances On: Lengths: ±.005

Diameters: ±.002

Angles: ± 2°



ORDER CODE: XXXX - X - XX - XX - XX - XX - 0

BASIC PART #

SPECIFY SHELL FINISH:

01 200 μ" TIN/LEAD OVER NICKEL

◆ 80 200 μ" TIN OVER NICKEL (RoHS)

◆ 15 10 μ" GOLD OVER NICKEL (RoHS)

SPECIFY CONTACT FINISH:

02 100 μ" TIN/LEAD OVER NICKEL

◆ 84 100 μ" TIN OVER NICKEL (RoHS)

◆ 27 30 μ" GOLD OVER NICKEL (RoHS)

SELECT CONTACT:

#12, #21 or #22 CONTACT (DATA ON PAGE 251 & 252)

(Contact may be interchanged with group A, B & C contact on page 248)

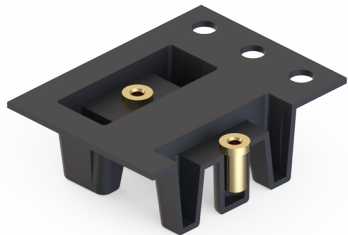
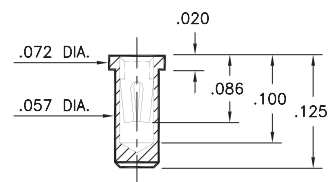
PIN RECEPTACLES

FOR .015" - .025" DIAMETER PINS
RECEPTACLES ON TAPE & REEL PACKAGING

0669

0669-0-15-XX-30-XX-10-0

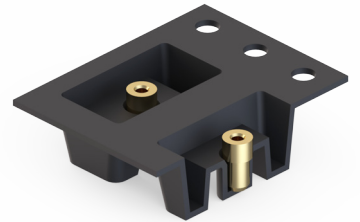
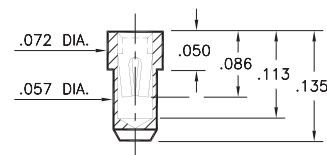
Solder mount in .060 min. mounting hole
Also available on 16mm wide carrier tape:
1,700 parts per 13" reel
Order as: 0669-0-57-XX-30-XX-10-0



0670

0670-0-15-XX-30-XX-10-0

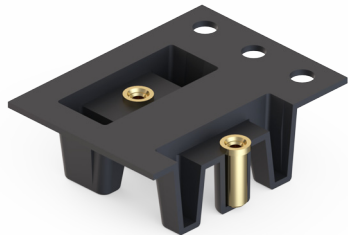
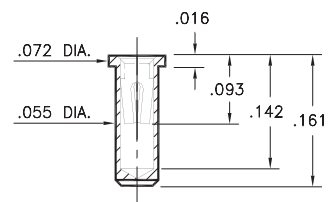
Solder mount in .060 min. mounting hole
Also available on 16mm wide carrier tape:
2,000 parts per 13" reel
Order as: 0670-0-57-XX-30-XX-10-0



0667

0667-0-15-XX-30-XX-10-0

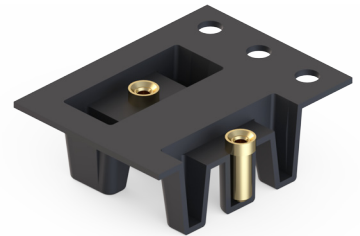
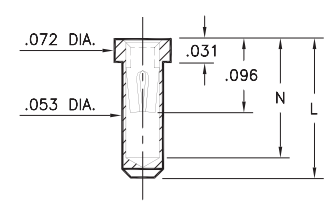
Solder mount in .057 min. mounting hole
Also available on 16mm wide carrier tape:
1,700 parts per 13" reel
Order as: 0667-0-57-XX-30-XX-10-0



1401/3185

XXXX-0-15-XX-30-XX-10-0

Solder mount in .055 min. mounting hole
Also available on 16mm wide carrier tape:
1,700 parts per 13" reel
Order as: XXXX-0-57-XX-30-XX-10-0

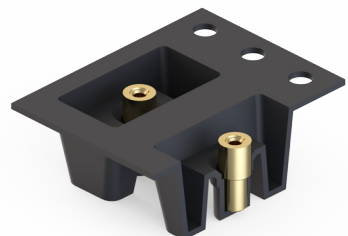
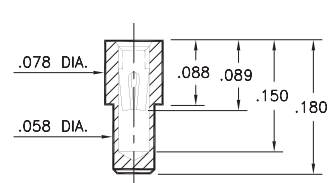


Basic Part Number	Length L	Depth N
1401-0	.165	.145
3185-0	.130	.109

0665

0665-0-15-XX-30-XX-10-0

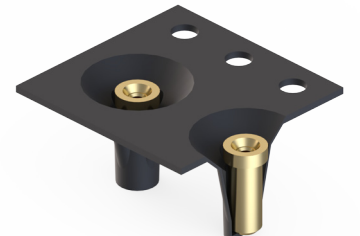
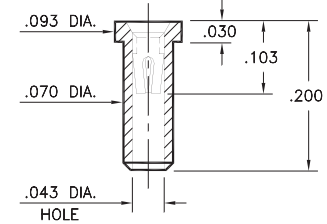
Solder mount in .061 min. mounting hole
Also available on 16mm wide carrier tape:
1,580 parts per 13" reel
Order as: 0665-0-57-XX-30-XX-10-0



0341

0341-0-15-XX-30-XX-10-0

Solder mount in .073 mounting hole
Also available on 12mm wide carrier tape:
1,400 parts per 13" reel
Order as: 0341-0-57-XX-30-XX-10-0



SPECIFICATIONS:

Shell Material: Brass Alloy 360, 1/2 Hard

Contact Material: Beryllium Copper Alloy 172, HT

Dimensions: Inches

Tolerances On: Lengths: ±.005

Diameters: ±.002

Angles: ±2°



ORDER CODE: XXXX - X - XX - XX - XX - XX - XX - 0

BASIC PART #

SPECIFY SHELL FINISH:

- 01 200 μ" TIN/LEAD OVER NICKEL
- ◆ 80 200 μ" TIN OVER NICKEL (RoHS)
- ◆ 15 10 μ" GOLD OVER NICKEL (RoHS)

SPECIFY CONTACT FINISH:

- 02 100 μ" TIN/LEAD OVER NICKEL
- ◆ 84 100 μ" TIN OVER NICKEL (RoHS)
- ◆ 27 30 μ" GOLD OVER NICKEL (RoHS)

SELECT CONTACT:

#30 CONTACT (DATA ON PAGE 253)

(For alternate contact choices, see group B & C on page 248)

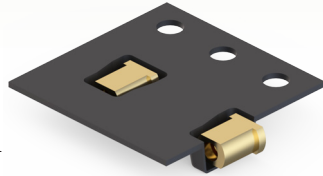
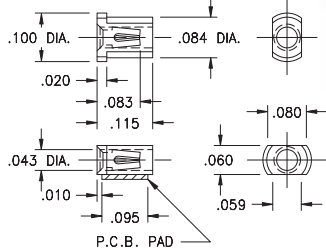
PIN RECEPTACLES

FOR .015" - .025" DIAMETER PINS
RECEPTACLES ON TAPE & REEL PACKAGING

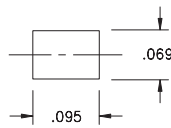
3907

3907-0-18-XX-30-XX-10-0

Surface mount
Also available on 12mm wide carrier tape:
4,000 parts per 13" reel
Order as: 3907-0-58-XX-30-XX-10-0



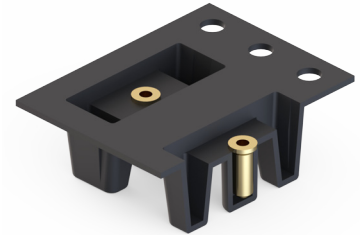
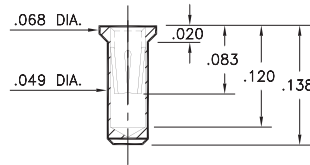
P.C.B. Layout



0680

0680-0-15-XX-32-XX-10-0

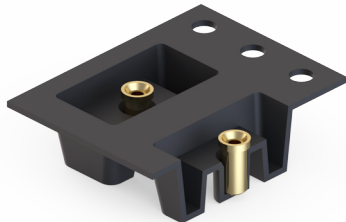
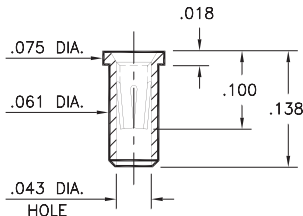
Solder mount in .051 min. mounting hole
Also available on 16mm wide carrier tape:
1,700 parts per 13" reel
Order as: 0680-0-57-XX-32-XX-10-0



0666

0666-0-15-XX-32-XX-10-0

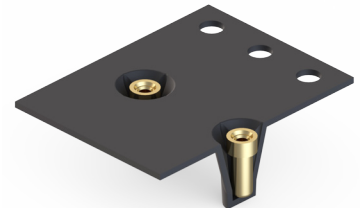
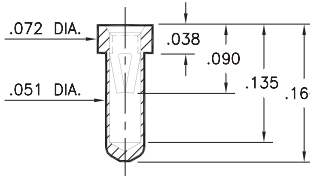
Solder mount in .064 min. mounting hole
Also available on 16mm wide carrier tape:
2,000 parts per 13" reel
Order as: 0666-0-57-XX-32-XX-10-0



0555

0555-0-15-XX-32-XX-10-0

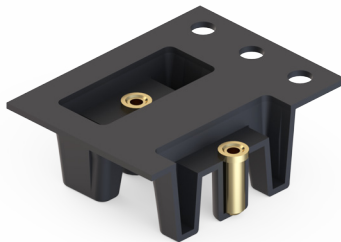
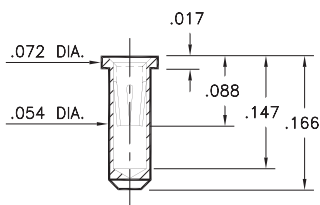
Solder mount in .053 min. mounting hole
Also available on 16mm wide carrier tape:
1,800 parts per 13" reel
Order as: 0555-0-57-XX-32-XX-10-0



0682

0682-0-15-XX-32-XX-10-0

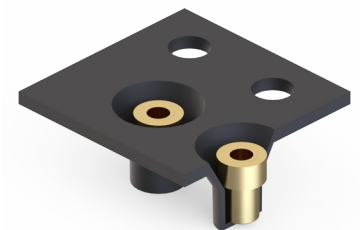
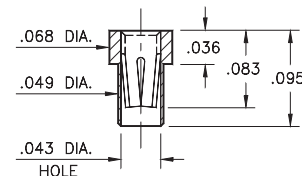
Solder mount in .056 min. mounting hole
Also available on 16mm wide carrier tape:
1,500 parts per 13" reel
Order as: 0682-0-57-XX-32-XX-10-0



5342

5342-0-15-XX-35-XX-10-0

Solder mount in .051 min. mounting hole
Also available on 8mm wide carrier tape:
6,000 parts per 13" reel
Order as: 5342-0-57-XX-35-XX-10-0



SPECIFICATIONS:

Shell Material: Brass Alloy 360, 1/2 Hard

Contact Material: Beryllium Copper Alloy 172, HT

Dimensions: Inches

Tolerances On: Lengths: ±.005

Diameters: ±.002

Angles: ± 2°



ORDER CODE: XXXX - X - XX - XX - XX - XX - XX - 0

BASIC PART #

SPECIFY SHELL FINISH:

- 01 200 μ" TIN/LEAD OVER NICKEL
- ◆ 80 200 μ" TIN OVER NICKEL (RoHS)
- ◆ 15 10 μ" GOLD OVER NICKEL (RoHS)

SPECIFY CONTACT FINISH:

- 02 100 μ" TIN/LEAD OVER NICKEL
- ◆ 84 100 μ" TIN OVER NICKEL (RoHS)
- ◆ 27 30 μ" GOLD OVER NICKEL (RoHS)

SELECT CONTACT:

#30, #32 or #35 CONTACT (DATA ON PAGE 253 & 254)
(For alternate contact choices, see group B & C on page 248)

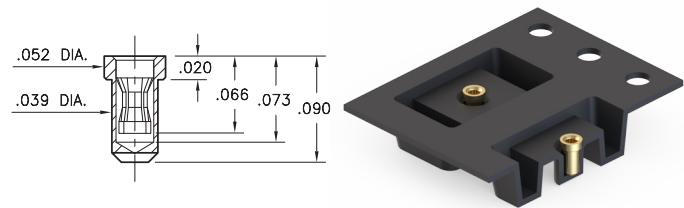
PIN RECEPTACLES

**FOR .018" - .023" DIAMETER PINS
RECEPTACLES ON TAPE & REEL PACKAGING**

0507

0507-0-15-XX-31-XX-10-0

Solder mount in .042 min. mounting hole
Also available on 16mm wide carrier tape:
3,000 parts per 13" reel
Order as: 0507-0-57-XX-31-XX-10-0



SPECIFICATIONS:

Shell Material: Brass Alloy 360, 1/2 Hard

Contact Material: Beryllium Copper Alloy 172, HT

Dimensions: Inches

Tolerances On: Lengths: $\pm .005$
Diameters: $\pm .002$
Angles: $\pm 2^\circ$



ORDER CODE: XXXX - X - XX - XX - XX - XX - XX - 0

BASIC PART #

SPECIFY SHELL FINISH:

- 01 200 μ " TIN/LEAD OVER NICKEL
- ◆ 80 200 μ " TIN OVER NICKEL (RoHS)
- ◆ 15 10 μ " GOLD OVER NICKEL (RoHS)

SPECIFY CONTACT FINISH:

- 01 200 μ " TIN/LEAD OVER NICKEL
- ◆ 80 200 μ " TIN OVER NICKEL (RoHS)
- ◆ 27 30 μ " GOLD OVER NICKEL (RoHS)

SELECT CONTACT:

#31 CONTACT

(For alternate contact choices, see group A on page 248)

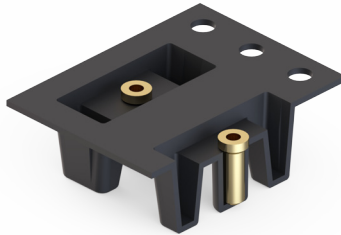
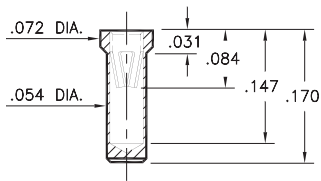
PIN RECEPTACLES

**FOR .020" - .032" DIAMETER PINS
RECEPTACLES ON TAPE & REEL PACKAGING**

0338

0338-0-15-XX-15-XX-10-0

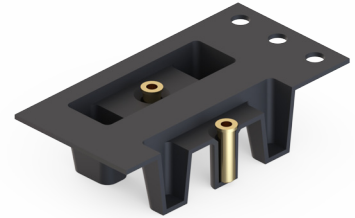
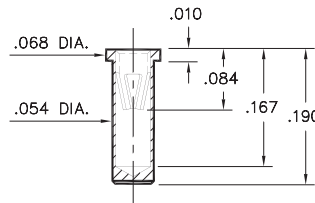
Solder mount in .057 min. mounting hole
Also available on 16mm wide carrier tape:
1,700 parts per 13" reel
Order as: 0338-0-57-XX-15-XX-10-0



0339

0339-0-15-XX-15-XX-10-0

Solder mount in .057 min. mounting hole
Also available on 24mm wide carrier tape:
1,540 parts per 13" reel
Order as: 0339-0-57-XX-15-XX-10-0



SPECIFICATIONS:

Shell Material: Brass Alloy 360, 1/2 Hard

Contact Material: Beryllium Copper Alloy 172, HT

Dimensions: Inches

Tolerances On: Lengths: ±.005

Diameters: ±.002

Angles: ± 2°



ORDER CODE: XXXX - X - XX - XX - XX - XX - XX - 0

BASIC PART #

SPECIFY SHELL FINISH:

- 01 200 μ" TIN/LEAD OVER NICKEL
- ◆ 80 200 μ" TIN OVER NICKEL (RoHS)
- ◆ 15 10 μ" GOLD OVER NICKEL (RoHS)

SPECIFY CONTACT FINISH:

- 01 200 μ" TIN/LEAD OVER NICKEL
- ◆ 80 200 μ" TIN OVER NICKEL (RoHS)
- ◆ 27 30 μ" GOLD OVER NICKEL (RoHS)

SELECT CONTACT:

#15 CONTACT (DATA ON PAGE 254)

(For alternate contact choices, see group K on page 248)

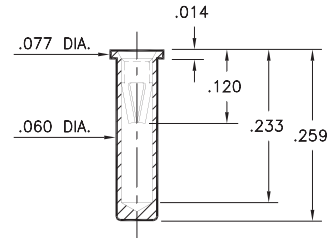
PIN RECEPTACLES

FOR .022" - .032" DIAMETER PINS
RECEPTACLES ON TAPE & REEL PACKAGING

0295

0295-0-15-XX-06-XX-10-0

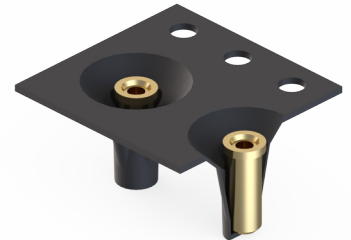
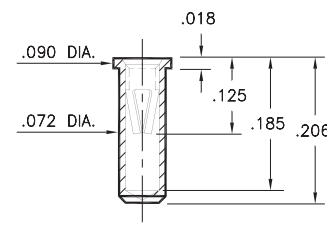
Solder mount in .063 min. mounting hole
Also available on 12mm wide carrier tape:
1,000 parts per 13" reel
Order as: 0295-0-57-XX-06-XX-10-0



0294

0294-0-15-XX-06-XX-10-0

Solder mount in .076 min. mounting hole
Also available on 12mm wide carrier tape:
1,400 parts per 13" reel
Order as: 0294-0-57-XX-06-XX-10-0



SPECIFICATIONS:

Shell Material: Brass Alloy 360, 1/2 Hard

Contact Material: Beryllium Copper Alloy 172, HT

Dimensions: Inches

Tolerances On: Lengths: $\pm .005$
Diameters: $\pm .002$
Angles: $\pm 2^\circ$



ORDER CODE: XXXX - X - XX - XX - XX - XX - XX - 0

BASIC PART #

SPECIFY SHELL FINISH:

- 01 200 μ " TIN/LEAD OVER NICKEL
- ◆ 80 200 μ " TIN OVER NICKEL (RoHS)
- ◆ 15 10 μ " GOLD OVER NICKEL (RoHS)

SPECIFY CONTACT FINISH:

- 01 200 μ " TIN/LEAD OVER NICKEL
- ◆ 80 200 μ " TIN OVER NICKEL (RoHS)
- ◆ 27 30 μ " GOLD OVER NICKEL (RoHS)

SELECT CONTACT:

#06 CONTACT (DATA ON PAGE 255)

(For alternate contact choices, see group D on page 248)

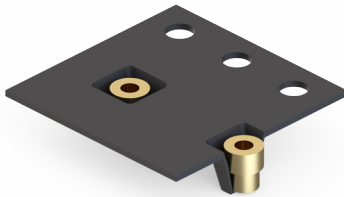
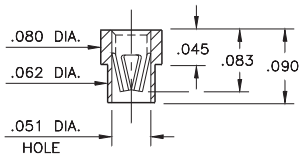
PIN RECEPTACLES

**FOR .022" - .034" DIAMETER PINS AND .025" SQUARE PINS
RECEPTACLES ON TAPE & REEL PACKAGING**

0287

0287-0-15-XX-16-XX-10-0

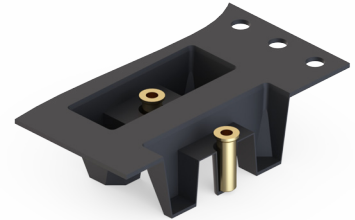
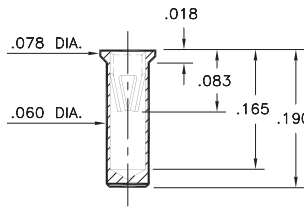
Solder mount in .065 min. mounting hole
Also available on 8mm wide carrier tape:
3,250 parts per 13" reel
Order as: 0287-0-57-XX-16-XX-10-0



0415

0415-0-15-XX-16-XX-10-0

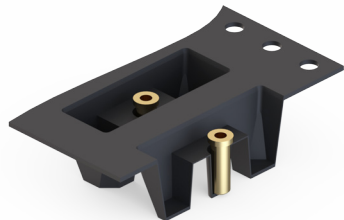
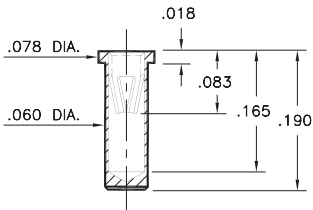
Solder mount in .063 min. mounting hole
Also available on 24mm wide carrier tape:
1,500 parts per 13" reel
Order as: 0415-0-57-XX-16-XX-10-0



6021

6021-0-15-XX-16-XX-10-0

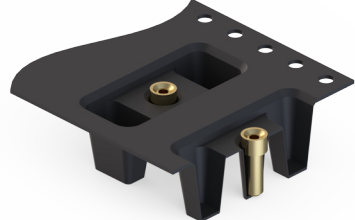
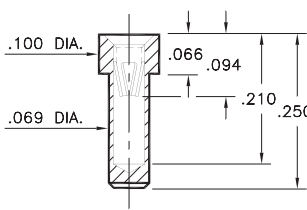
Solder mount in .062 min. mounting hole
Also available on 24mm wide carrier tape:
1,500 parts per 13" reel
Order as: 6021-0-57-XX-16-XX-10-0



8679

8679-0-15-XX-16-XX-10-0

Solder mount in .071 min. mounting hole
Also available on 24mm wide carrier tape:
800 parts per 13" reel
Order as: 8679-0-57-XX-16-XX-10-0



SPECIFICATIONS:

Shell Material: Brass Alloy 360, 1/2 Hard

Contact Material: Beryllium Copper Alloy 172, HT

Dimensions: Inches

Tolerances On: Lengths: ±.005

Diameters: ±.002

Angles: ± 2°



ORDER CODE: XXXX - X - XX - XX - XX - XX - XX - 0

BASIC PART #

SPECIFY SHELL FINISH:

- 01 200 μ" TIN/LEAD OVER NICKEL
- ◆ 80 200 μ" TIN OVER NICKEL (RoHS)
- ◆ 15 10 μ" GOLD OVER NICKEL (RoHS)

SPECIFY CONTACT FINISH:

- 01 200 μ" TIN/LEAD OVER NICKEL
- ◆ 80 200 μ" TIN OVER NICKEL (RoHS)
- ◆ 27 30 μ" GOLD OVER NICKEL (RoHS)

SELECT CONTACT:

#16 CONTACT (DATA ON PAGE 256)

(For alternate contact choices, see group D on page 248)

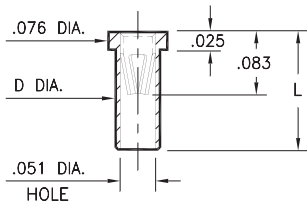
PIN RECEPTACLES

**FOR .025" - .037" DIAMETER PINS AND .025" SQUARE PINS
RECEPTACLES ON TAPE & REEL PACKAGING**

0305

0305-X-15-XX-47-XX-10-0

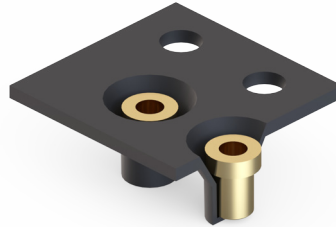
Solder mount in .059/.061 mounting hole
Also available on 8mm or 24mm wide carrier tape: See chart for details
Order as: 0305-X-57-XX-47-XX-10-0



Basic Part Number	Length L	Dia. D
0305-0	.095	.056
0305-1	.105	.058
0305-2	.155	.058

T&R Packaging

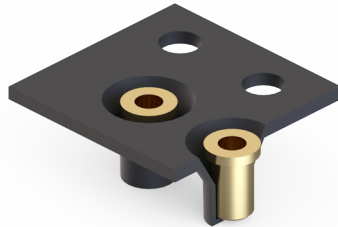
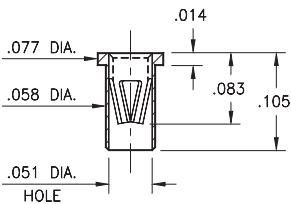
Basic Part Number	Tape Width	Parts per 13" Reel
0305-0	8mm	6,000
0305-1	8mm	6,000
0305-2	24mm	1,500



7305

7305-0-15-XX-47-XX-10-0

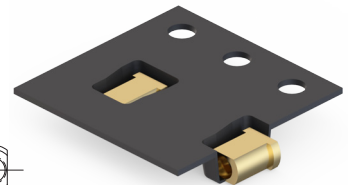
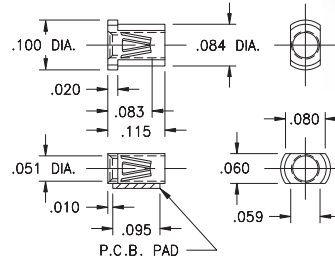
Solder mount in .060 min. mounting hole
Also available on 8mm wide carrier tape: 6,000 parts per 13" reel
Order as: 7305-0-57-XX-47-XX-10-0



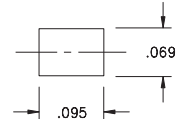
8806

8806-0-18-XX-47-XX-40-0

Surface mount
Also available on 12mm wide carrier tape: 4,000 parts per 13" reel
Order as: 8806-0-58-XX-47-XX-10-0



P.C.B. Layout



SPECIFICATIONS:

Shell Material: Brass Alloy 360, 1/2 Hard

Contact Material: Beryllium Copper Alloy 172, HT

Dimensions: Inches

Tolerances On: Lengths: ±.005

Diameters: ±.002

Angles: ±2°



ORDER CODE: XXXX - X - XX - XX - XX - XX - XX - 0

BASIC PART #

SPECIFY SHELL FINISH:

- 01 200 μ" TIN/LEAD OVER NICKEL
- ◆ 80 200 μ" TIN OVER NICKEL (RoHS)
- ◆ 15 10 μ" GOLD OVER NICKEL (RoHS)

SPECIFY CONTACT FINISH:

- 01 200 μ" TIN/LEAD OVER NICKEL
- ◆ 80 200 μ" TIN OVER NICKEL (RoHS)
- ◆ 27 30 μ" GOLD OVER NICKEL (RoHS)

SELECT CONTACT:

#47 CONTACT (DATA ON PAGE 256)

(For alternate contact choices, see group D on page 248)

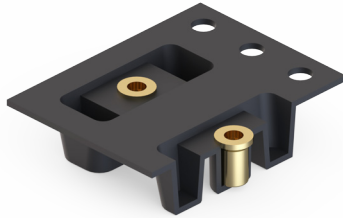
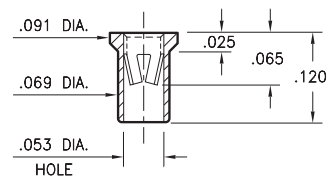
PIN RECEPTACLES

FOR .037" - .043" DIAMETER PINS
RECEPTACLES ON TAPE & REEL PACKAGING

7406

7406-0-15-XX-18-XX-10-0

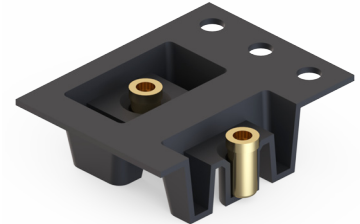
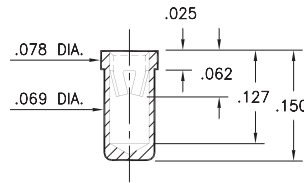
Solder mount in .071 min. mounting hole
Also available on 16mm wide carrier tape:
2,200 parts per 13" reel
Order as: 7406-0-57-XX-18-XX-10-0



8331

8331-0-15-XX-18-XX-10-0

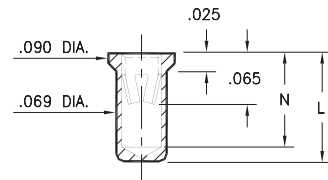
Solder mount in .071 min. mounting hole
Also available on 16mm wide carrier tape:
1,900 parts per 13" reel
Order as: 8331-0-57-XX-18-XX-10-0



0331/9353

X3XX-0-15-XX-18-XX-10-0

Solder mount in .071 min. mounting hole
Also available on 24mm wide carrier tape:
1,000 parts per 13" reel
Order as: X3XX-0-57-XX-18-XX-10-0

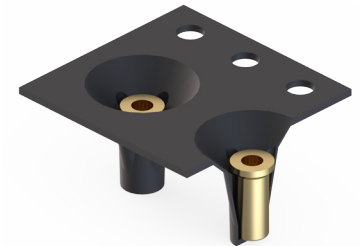
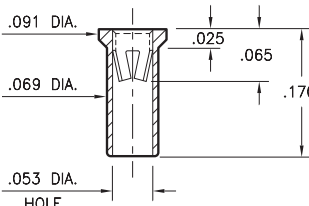


Basic Part Number	Length L	Depth N
0331-0	.150	.127
9353-0	.170	.147

9354

9354-0-15-XX-18-XX-10-0

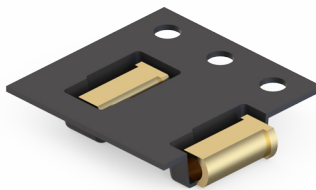
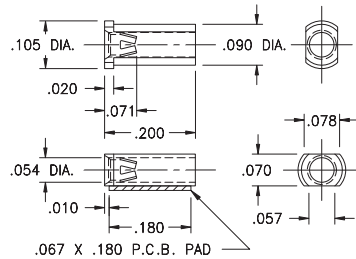
Solder mount in .071 min. mounting hole
Also available on 12mm wide carrier tape:
1,400 parts per 13" reel
Order as: 9354-0-57-XX-18-XX-10-0



6628

6628-0-18-XX-18-XX-10-0

Surface mount
Also available on 12mm wide carrier tape:
3,700 parts per 13" reel
Order as: 6628-0-58-XX-18-XX-10-0



SPECIFICATIONS:

Shell Material: Brass Alloy 360, 1/2 Hard

Contact Material: Beryllium Copper Alloy 172, HT

Dimensions: Inches

Tolerances On: Lengths: ±.005

Diameters: ±.002

Angles: ± 2°



ORDER CODE: XXXX - X - XX - XX - XX - XX - XX - 0

BASIC PART #

SPECIFY SHELL FINISH:

- 01 200 μ" TIN/LEAD OVER NICKEL
- ◆ 80 200 μ" TIN OVER NICKEL (RoHS)
- ◆ 15 10 μ" GOLD OVER NICKEL (RoHS)

SPECIFY CONTACT FINISH:

- 01 200 μ" TIN/LEAD OVER NICKEL
- ◆ 80 200 μ" TIN OVER NICKEL (RoHS)
- ◆ 27 30 μ" GOLD OVER NICKEL (RoHS)

SELECT CONTACT:

#18 CONTACT (DATA ON PAGE 257)

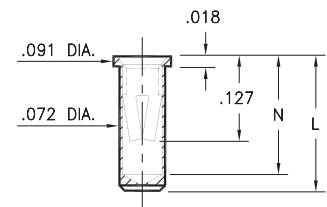
(For alternate contact choices, see group L on page 248)

PIN RECEPTACLES

FOR .032" - .046" DIAMETER PINS
RECEPTACLES ON TAPE & REEL PACKAGING

0327/0351/0373

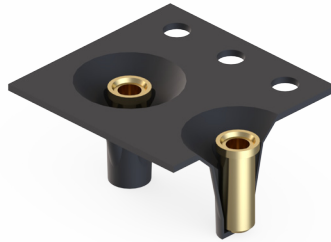
03XX-0-15-XX-34-XX-10-0
Solder mount in .075 min. mounting hole
Also available on 12mm or 24mm wide carrier tape: See chart for details
Order as: 03XX-0-57-XX-34-XX-10-0



Basic Part Number	Length L	Depth N
0327-0	.206	.180
0351-0	.226	.200
0373-0	.270	.241

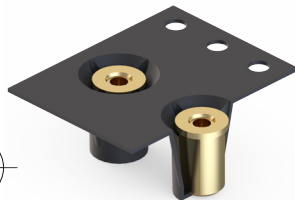
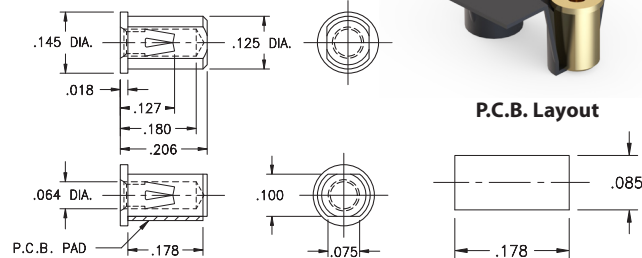
T&R Packaging

Basic Part Number	Tape Width	Parts per 13" Reel
0327-0	12mm	1,400
0351-0	24mm	1,100
0373-0	24mm	1,000



8206

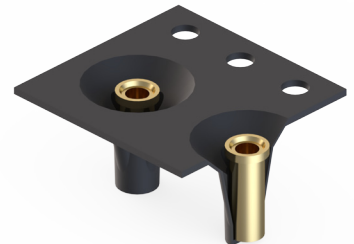
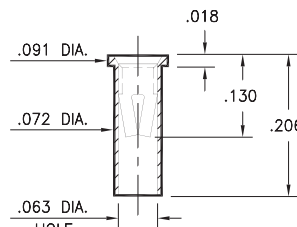
8206-0-15-XX-34-XX-40-0
Surface mount, board edge
Also available on 16mm wide carrier tape:
Packaged Vertically 1,400 parts per 13" reel
Order as: 8206-0-57-XX-34-XX-40-0



P.C.B. Layout

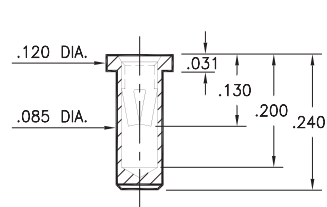
0312

0312-0-15-XX-34-XX-10-0
Solder mount in .075 min. mounting hole
Also available on 12mm wide carrier tape:
1,400 parts per 13" reel
Order as: 0312-0-57-XX-34-XX-10-0



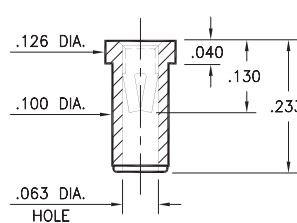
0340

0340-0-15-XX-34-XX-10-0
Solder mount in .087 min. mounting hole
Also available on 24mm wide carrier tape:
1,250 parts per 13" reel
Order as: 0340-0-57-XX-34-XX-10-0



0356

0356-0-15-XX-34-XX-10-0
Solder mount in .102 min. mounting hole
Also available on 24mm wide carrier tape:
1,100 parts per 13" reel
Order as: 0356-0-57-XX-34-XX-10-0



SPECIFICATIONS:

Shell Material: Brass Alloy 360, 1/2 Hard
Contact Material: Beryllium Copper Alloy 172, HT
Dimensions: Inches
Tolerances On: Lengths: ±.005
Diameters: ±.002
Angles: ± 2°



ORDER CODE: XXXX - X - XX - XX - XX - XX - XX - 0

BASIC PART #

SPECIFY SHELL FINISH:

- 01 200 μ" TIN/LEAD OVER NICKEL
- ◆ 80 200 μ" TIN OVER NICKEL (RoHS)
- ◆ 15 10 μ" GOLD OVER NICKEL (RoHS)

SPECIFY CONTACT FINISH:

- 01 200 μ" TIN/LEAD OVER NICKEL
- ◆ 80 200 μ" TIN OVER NICKEL (RoHS)
- ◆ 27 30 μ" GOLD OVER NICKEL (RoHS)

SELECT CONTACT:

#34 CONTACT (DATA ON PAGE 258)

(For alternate contact choices, see group E on page 248)

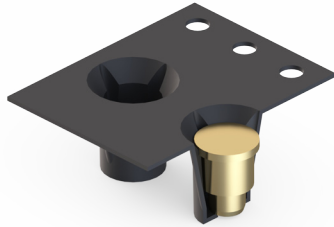
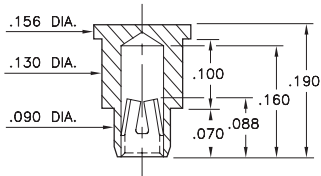
PIN RECEPTACLES

FOR .040" - .050" DIAMETER PINS
RECEPTACLES ON TAPE & REEL PACKAGING

9184

9184-0-15-XX-02-XX-40-0

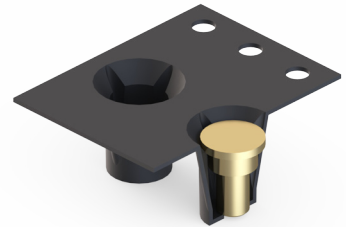
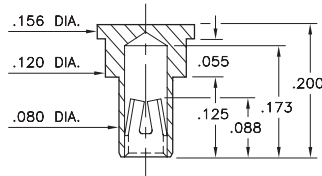
Bottom entry, surface mount
.092 min. plated through-hole
Also available on carrier tape,
Order as: 9184-0-57-XX-02-XX-40-0



9222

9222-2-15-XX-02-XX-40-0

Bottom entry, surface mount
.082 min. plated through-hole
Also available on carrier tape,
Order as: 9222-2-57-XX-02-XX-40-0



SPECIFICATIONS:

Shell Material: Brass Alloy 360, 1/2 Hard

Contact Material: Beryllium Copper Alloy 172, HT

Dimensions: Inches

Tolerances On: Lengths: ±.005

Diameters: ±.002

Angles: ± 2°



ORDER CODE: XXXX - X - XX - XX - XX - XX - XX - 0

BASIC PART #

SPECIFY SHELL FINISH:

- 01 200 μ" TIN/LEAD OVER NICKEL
- ◆ 80 200 μ" TIN OVER NICKEL (RoHS)
- ◆ 15 10 μ" GOLD OVER NICKEL (RoHS)

SPECIFY CONTACT FINISH:

- 01 200 μ" TIN/LEAD OVER NICKEL
- ◆ 80 200 μ" TIN OVER NICKEL (RoHS)
- ◆ 27 30 μ" GOLD OVER NICKEL (RoHS)

SELECT CONTACT:

#02 CONTACT (DATA ON PAGE 259)

(For alternate contact choices, see group F on page 248)

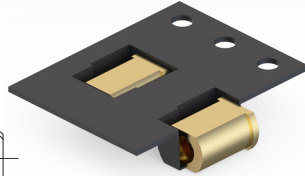
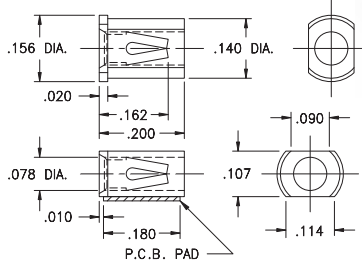
PIN RECEPTACLES

**FOR .040" - .060" DIAMETER PINS (#03 CONTACT)
FOR .048" - .064" DIAMETER PINS (#13 CONTACT)
RECEPTACLES ON TAPE & REEL PACKAGING**

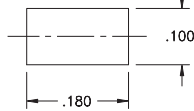
4064

4064-0-18-XX-03-XX-40-0

Surface mount
Also available on 16mm wide carrier tape:
2,400 parts per 13" reel
Order as: 4064-0-58-XX-03-XX-40-0



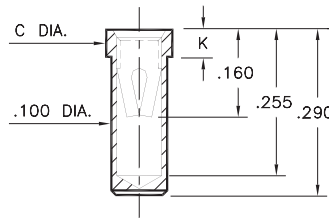
P.C.B. Layout



0435/0436

043X-0-15-XX-03-XX-10-0

Solder mount in .102 min. mounting hole
Also available on 24mm wide carrier tape:
950 parts per 13" reel
Order as: 0435-0-57-XX-03-XX-10-0

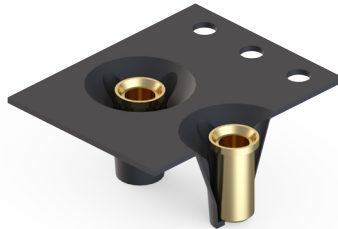
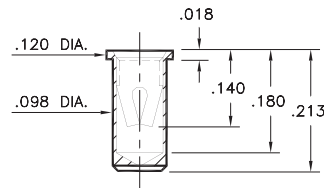


Basic Part Number	Dia. C	Length K
0435-0	.118	.050
0436-0	.125	.070

0364

0364-0-15-XX-13-XX-10-0

Solder mount in .100 min. mounting hole
Also available on 16mm wide carrier tape:
1,300 parts per 13" reel
Order as: 0364-0-57-XX-13-XX-10-0



SPECIFICATIONS:

Shell Material: Brass Alloy 360, 1/2 Hard

Contact Material: Beryllium Copper Alloy 172, HT

Dimensions: Inches

Tolerances On: Lengths: ±.005

Diameters: ±.002

Angles: ±2°



ORDER CODE: XXXX - X - XX - XX - XX - XX - XX - 0

BASIC PART #

SPECIFY SHELL FINISH:

- 01 200 μ" TIN/LEAD OVER NICKEL
- ◆ 80 200 μ" TIN OVER NICKEL (RoHS)
- ◆ 15 10 μ" GOLD OVER NICKEL (RoHS)

SPECIFY CONTACT FINISH:

- 01 200 μ" TIN/LEAD OVER NICKEL
- ◆ 80 200 μ" TIN OVER NICKEL (RoHS)
- ◆ 27 30 μ" GOLD OVER NICKEL (RoHS)

SELECT CONTACT:

#03 or #13 CONTACT (DATA ON PAGE 259 - 260)

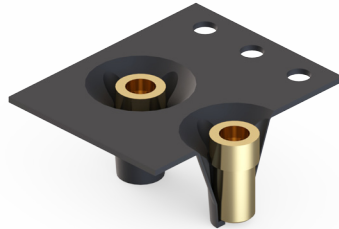
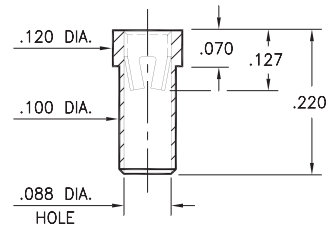
PIN RECEPTACLES

**FOR .048" - .064" DIAMETER PINS (#13 CONTACT)
FOR .045" - .065" DIAMETER PINS (#23 CONTACT)
RECEPTACLES ON TAPE & REEL PACKAGING**

9064

9064-0-15-XX-13-XX-10-0

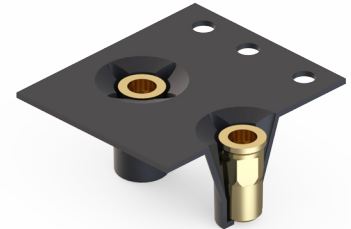
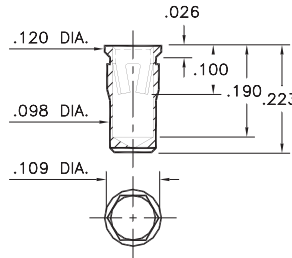
Solder mount in .102 min. mounting hole
Also available on 16mm wide carrier tape:
1,300 parts per 13" reel
Order as: 9064-0-57-XX-13-XX-10-0



0365

0365-0-15-XX-23-XX-10-0

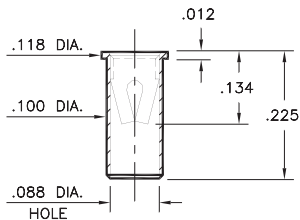
Hex press-fit in .105 plated through-hole
Also available on 16mm wide carrier tape:
1,200 parts per 13" reel
Order as: 0365-0-57-XX-23-XX-10-0



0372

0372-0-15-XX-13-XX-10-0

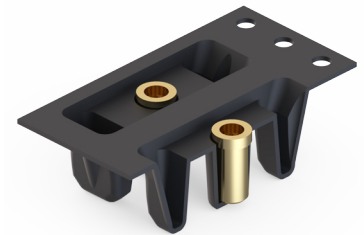
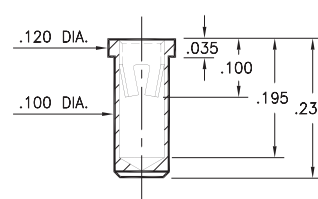
Solder mount in .102 min. mounting hole
Also available on 24mm wide carrier tape:
950 parts per 13" reel
Order as: 0372-0-57-XX-13-XX-10-0



9401

9401-0-15-XX-23-XX-10-0

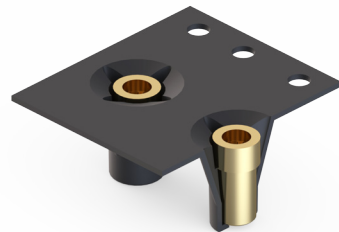
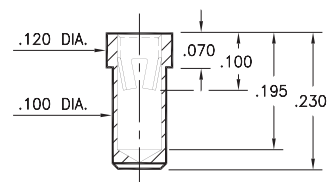
Solder mount in .102 min. mounting hole
Also available on 24mm wide carrier tape:
1,100 parts per 13" reel
Order as: 9401-0-57-XX-23-XX-10-0



9801

9801-0-15-XX-23-XX-10-0

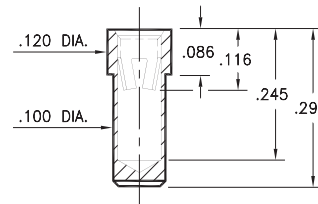
Solder mount in .102 min. mounting hole
Also available on 16mm wide carrier tape:
1,200 parts per 13" reel
Order as: 9801-0-57-XX-23-XX-10-0



8829

8829-0-15-XX-23-XX-10-0

Solder mount in .102 min. mounting hole
Also available on 24mm wide carrier tape:
950 parts per 13" reel
Order as: 8829-0-57-XX-23-XX-10-0



SPECIFICATIONS:

Shell Material: Brass Alloy 360, 1/2 Hard

Contact Material: Beryllium Copper Alloy 172, HT

Dimensions: Inches

Tolerances On: Lengths: ±.005

Diameters: ±.002

Angles: ± 2°



ORDER CODE: XXXX - X - XX - XX - XX - XX - 0

BASIC PART #

SPECIFY SHELL FINISH:

01 200 μ" TIN/LEAD OVER NICKEL

◆ 80 200 μ" TIN OVER NICKEL (RoHS)

◆ 15 10 μ" GOLD OVER NICKEL (RoHS)

SPECIFY CONTACT FINISH:

01 200 μ" TIN/LEAD OVER NICKEL

◆ 80 200 μ" TIN OVER NICKEL (RoHS)

◆ 27 30 μ" GOLD OVER NICKEL (RoHS)

SELECT CONTACT:

#13 or #23 CONTACT (DATA ON PAGE 260)

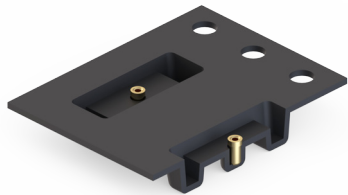
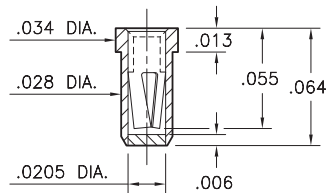
(For alternate contact choices, see group G on page 248)

PIN RECEPTACLES

PIN RECEPTACLES WITH ORGANIC FIBRE PLUG® SOLDER BARRIER (SEE SPECIFIC CONTACT RANGE ON PAGES 250, 251 & 253)

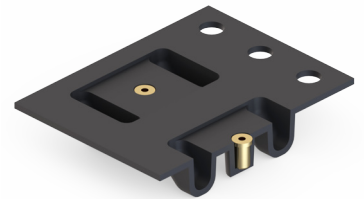
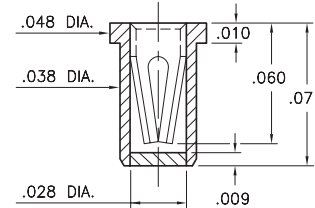
4428

4428-0-XX-XX-04-XX-10-0
Solder mount in $\varnothing .032$ " max. PTH
#04 Contact for $\varnothing .008$ " - $.013$ " pins
Also available on 16mm wide carrier tape:
3,400 parts per 13" reel



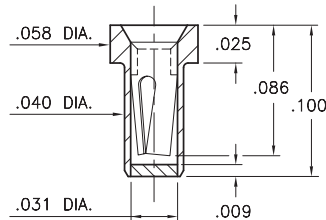
5359

5359-0-XX-XX-10-XX-10-0
Solder mount in $\varnothing .043$ " $\pm .003$ " PTH
#10 Contact for $\varnothing .012$ " - $.017$ " pins
Also available on 16mm wide carrier tape:
3,000 parts per 13" reel



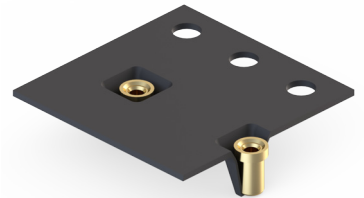
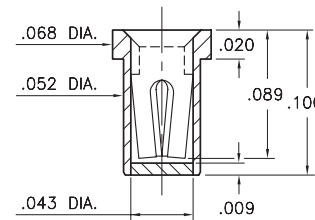
0577

0577-0-XX-XX-21-XX-10-0
Solder mount in $\varnothing .045$ " $\pm .003$ " PTH
#21 Contact for $\varnothing .015$ " - $.032$ " pins
Also available on 12mm wide carrier tape:
3,000 parts per 13" reel



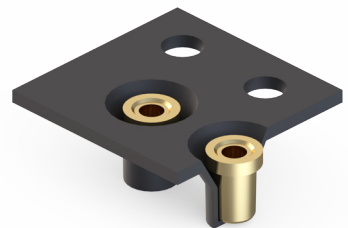
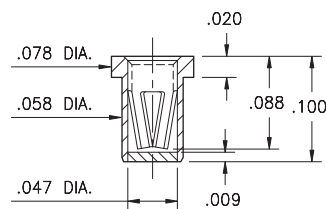
4015

4015-0-XX-XX-30-XX-10-0
Solder mount in $\varnothing .057$ " $\pm .003$ " PTH
#30 Contact for $\varnothing .015$ " - $.025$ " pins
Also available on 8mm wide carrier tape:
5,500 parts per 13" reel



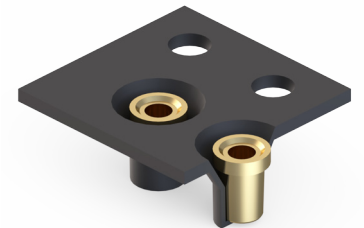
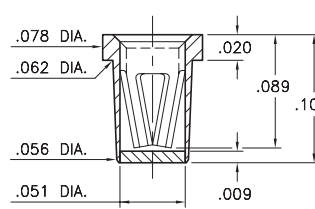
0337

0337-0-XX-XX-15-XX-10-0
Solder mount in $\varnothing .066$ " $\pm .003$ " PTH
#15 Contact for $\varnothing .020$ " - $.032$ " pins
Also available on 8mm wide carrier tape:
6,000 parts per 13" reel



4280

4280-0-XX-XX-16-XX-10-0
Solder mount in $\varnothing .067$ " $\pm .003$ " PTH
#16 Contact for $\varnothing .022$ " - $.034$ " pins
Also available on 8mm wide carrier tape:
6,000 parts per 13" reel



SPECIFICATIONS:

Shell Material: Brass Alloy 360, 1/2 Hard
Contact Material: Beryllium Copper Alloy 172, HT
Solder Barrier: Organic Fibre Plug®
Dimensions: Inches
Tolerances On: Lengths: $\pm .005$
Diameters: $\pm .002$
Angles: $\pm 2^\circ$



ORDER CODE: XXXX - 0 - XX - XX - XX - XX - XX - 0

BASIC PART #

SPECIFY PACKAGING:

- 43 Discrete Receptacles
- 67 Supplied on 13" Reels

SPECIFY SHELL FINISH:

- 01 200 μ " TIN/LEAD OVER NICKEL
- 80 200 μ " TIN OVER NICKEL (RoHS)

CONTACT:

#04, #10, #15, #16, #21 or #30 CONTACT (DATA ON PAGES 250, 251 & 253)

SPECIFY CONTACT FINISH:

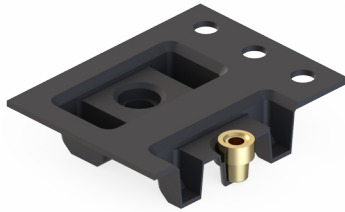
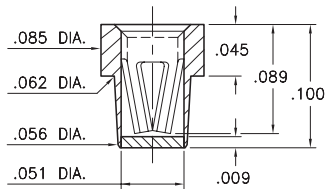
- 27 30 μ " GOLD OVER NICKEL (RoHS)
- 02 100 μ " TIN/LEAD OVER NICKEL
- 84 100 μ " TIN OVER NICKEL (RoHS)

PIN RECEPTACLES

PIN RECEPTACLES WITH ORGANIC FIBRE PLUG® SOLDER BARRIER (SEE SPECIFIC CONTACT RANGE ON PAGES 254 - 262)

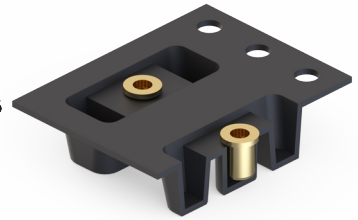
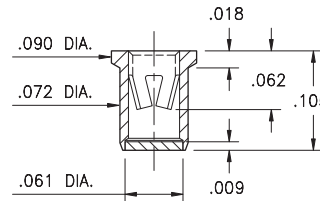
5280

5280-0-XX-XX-16-XX-40-0
Solder mount in $\varnothing .067" \pm .003"$ PTH
#16 Contact for $\varnothing .022" - .034"$ pins
Also available on 16mm wide carrier tape:
2,200 parts per 13" reel



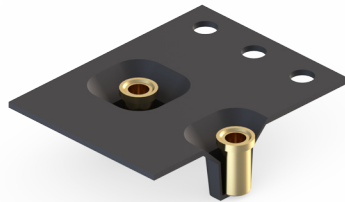
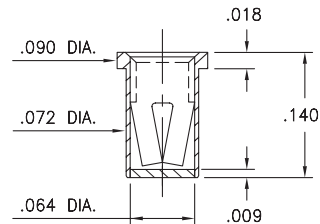
0332

0332-0-XX-XX-18-XX-10-0
Solder mount in $\varnothing .079" \pm .003"$ PTH
#18 Contact for $\varnothing .037" - .043"$ pins
Also available on 16mm wide carrier tape:
2,200 parts per 13" reel



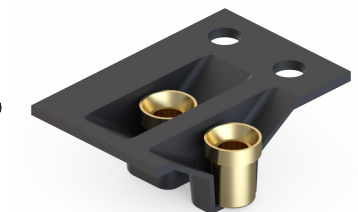
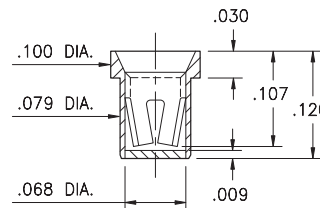
0479

0479-0-XX-XX-34-XX-10-0
Solder mount in $\varnothing .077" \pm .003"$ PTH
#34 Contact for $\varnothing .032" - .046"$ pins
Also available on 16mm wide carrier tape:
2,200 parts per 13" reel



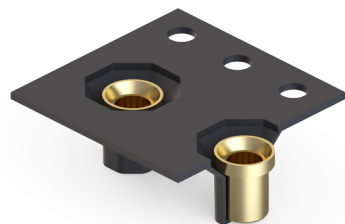
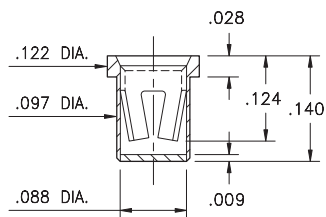
0375

0375-0-XX-XX-02-XX-10-0
Solder mount in $\varnothing .087" \pm .003"$ PTH
#02 Contact for $\varnothing .040" - .050"$ pins
Also available on 12mm wide carrier tape:
4,500 parts per 13" reel



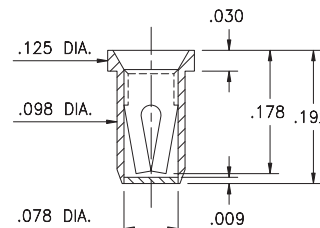
0384

0384-0-XX-XX-23-XX-10-0
Solder mount in $\varnothing .105" \pm .003"$ PTH
#23 Contact for $\varnothing .045" - .065"$ pins
Also available on 12mm wide carrier tape:
2,000 parts per 13" reel



0353

0353-0-XX-XX-03-XX-10-0
Solder mount in $\varnothing .106" \pm .003"$ PTH
#03 Contact for $\varnothing .040" - .060"$ pins
Also available on 12mm wide carrier tape:
1,300 parts per 13" reel



SPECIFICATIONS:

Shell Material: Brass Alloy 360, 1/2 Hard
Contact Material: Beryllium Copper Alloy 172, HT
Solder Barrier: Organic Fibre Plug®
Dimensions: Inches
Tolerances On: Lengths: $\pm .005$
Diameters: $\pm .002$
Angles: $\pm 2^\circ$



ORDER CODE: XXXX - 0 - XX - XX - XX - XX - XX - 0

BASIC PART

SPECIFY PACKAGING:
43 Discrete Receptacles
67 Supplied on 13" Reels
SPECIFY SHELL FINISH:
01 200 μ " TIN/LEAD OVER NICKEL
80 200 μ " TIN OVER NICKEL (RoHS)

SPECIFY CONTACT FINISH:

27 30 μ " GOLD OVER NICKEL (RoHS)
02 100 μ " TIN/LEAD OVER NICKEL
80 200 μ " TIN OVER NICKEL (RoHS)

CONTACT:

#02, #03, #16, #18, #23, or #34 CONTACT (DATA ON PAGES 254 - 262)

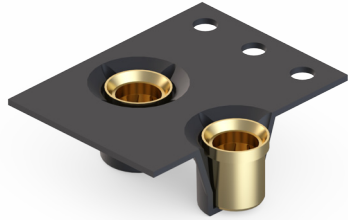
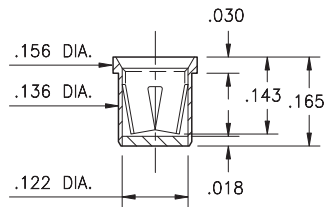
PIN RECEPTACLES

PIN RECEPTACLES WITH ORGANIC FIBRE PLUG® SOLDER BARRIER (SEE SPECIFIC CONTACT RANGE ON PAGES 256 - 262)

0321

0321-0-XX-XX-08-XX-10-0

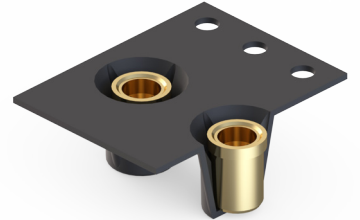
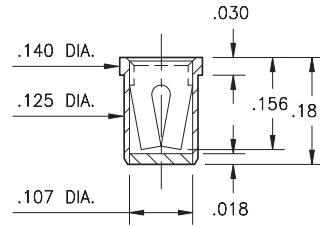
Solder mount in $\varnothing .144" \pm .003"$ PTH
#08 Contact for $\varnothing .084" - .102"$ pins
Also available on 16mm wide carrier tape:
1,700 parts per 13" reel



0376

0376-0-XX-XX-07-XX-10-0

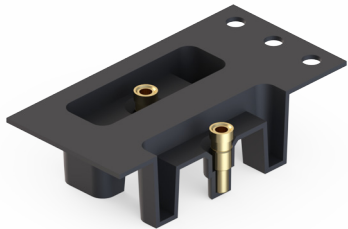
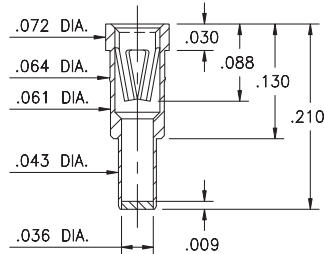
Solder mount in $\varnothing .133" \pm .003"$ PTH
#07 Contact for $\varnothing .065" - .082"$ pins
Also available on 16mm wide carrier tape:
1,500 parts per 13" reel



3435

3435-0-XX-XX-47-XX-04-0

Solder mount in $\varnothing .046" \pm .003"$ PTH
#47 Contact for $\varnothing .025" - .037"$ and $.025"$ square pins. Also available on 24mm wide carrier tape: 1,400 parts per 13" reel



SPECIFICATIONS:

Shell Material: Brass Alloy 360, 1/2 Hard

Contact Material: Beryllium Copper Alloy 172, HT

Solder Barrier: Organic Fibre Plug®

Dimensions: Inches

Tolerances On: Lengths: $\pm .005$
Diameters: $\pm .002$
Angles: $\pm 2^\circ$



ORDER CODE: XXXX - 0 - XX - XX - XX - XX - XX - 0

BASIC PART #

SPECIFY PACKAGING:

43 Discrete Receptacles

67 Supplied on 13" Reels

SPECIFY SHELL FINISH:

01 200 μ " TIN/LEAD OVER NICKEL

80 200 μ " TIN OVER NICKEL (RoHS)

CONTACT:

SPECIFY CONTACT FINISH:

27 30 μ " GOLD OVER NICKEL (RoHS)

02 100 μ " TIN/LEAD OVER NICKEL

84 100 μ " TIN OVER NICKEL (RoHS)

#07, #08 or #47 CONTACT (DATA ON PAGES 256-262)